



→ Cantilever lift for light commercial vehicles

DH-LM.10 • 500 - 1000 kg



The 4-cylinder DH-LM.10 has been DHOLLANDIA's **best seller** in the light-duty truck range for many years, thanks to its superior stability and performance in comparison to competing 2-cylinder and 3-cylinder lifts, and its excellent price-quality ratio.

This lift is now partially superseded by the DH-LMA.08. But it continues to play an important role: for **1000 kg lift capacity**; for **platforms above 1800 mm**; for vehicles up to 7.5T GVW with a floor height above 1050 mm, and for a number of special executions, such as the half-width lift DH-LMZ.10.

The DH-LM.10 is available with standard bolt-on mounting plates, and quick-fit mounting plates adapted to all popular brands and types of van chassis.

Lift capacity

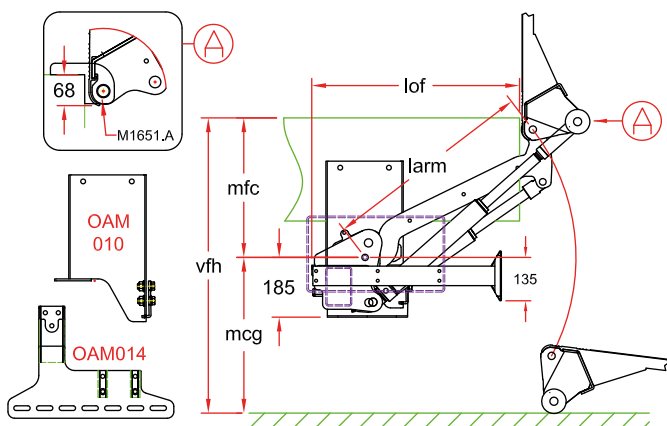
CAP	CG	LM
500 kg	600 mm	3 kNm
750 kg	750 mm	5,6 kNm
1000 kg	750 mm	7,5 kNm

Weights [see pg. 19]

ALU platform	
1250 mm	200 kg
1450 mm	208 kg
1600 mm	214 kg
1800 mm	229 kg

Weights incl. CE bumper

Best seller: superior stability and performance



Fitting dimensions

1arm		550	650	750
		LM.10.05	LM.10.06 / LM.10.07	
vfh max. (1)		950	1080	1220
mfc max.		475	530	610
mfc min.		250	250	300
mcg max.		475	550	610
1of (2)	at mfc max.	455	545	605
1of (2)	at mfc min.	630	740	660

(1) For higher floor heights, please refer to type DH-LM.15

(2) Overhang valid for standard frame. 1of dimension may change for quick-fit executions. Ask confirmation from DHOLLANDIA.



Technical specifications

Lift frame	Rectangular cross tube
Cylinders	2 lift cylinders + 2 tilt cylinders
Type of ride [see pg. 8-9]	Wedged platform. Level ride + automatic tilt at ground level
Platform material	Alu or steel (steel = 1000 kg only)
Platform overlap under floor	-68 mm
Standard platform depths	Steel: 1250 - 1500 mm (max. 1500 mm) Alu: 1250 - 1450 - 1600 - 1800 mm (max. 2000 mm)
Standard platform widths	Steel: 2350 - 2480 - 2500 - 2520 - 2550 mm Alu: free up to 2550 mm in steps of 5 mm
Lift arm lengths	<ul style="list-style-type: none"> LM.10.05 : 550 - 650 mm LM.10.06 / LM.10.07 : 650 - 750 mm
Lift arm widths	<ul style="list-style-type: none"> LM.10.05 : 550 - 970 mm LM.10.06 : 1200 mm LM.10.07 : 510 - 900 - 950 - 1060 - 1177 mm Adapted to the various brands and types of chassis
Standard control unit [see pg. 11]	OAE030.BT.P
Standard finish of the lift frame	Protection PLUS [OAT102] or Hot-dip zinc plated finish [OAT104]