



→ Passenger lift for midibuses, urban buses

DH-TV.03 • 300 kg



The DH-TV.03 is specially designed for **city buses**. It is mounted at the side door of the bus, and occupies the space that is otherwise occupied by the access stairs.

At rest, it functions as **stair for pedestrians** to step in and out the bus. When deployed, the system is **automatically transformed into a lift platform** to assist wheelchair occupants to embark or disembark the vehicle.

The DH-TV is available in 4 executions:

- the **STANDARD execution** with automatic deployment of the lift platform;
- the **MICRO execution** with automatic deployment of the lift platform;
- the **MANUAL execution** whereby the extension part of the platform is pulled out, and pushed back in by hand.
- the **3-STEP execution** with automatic deployment of the lift platform.

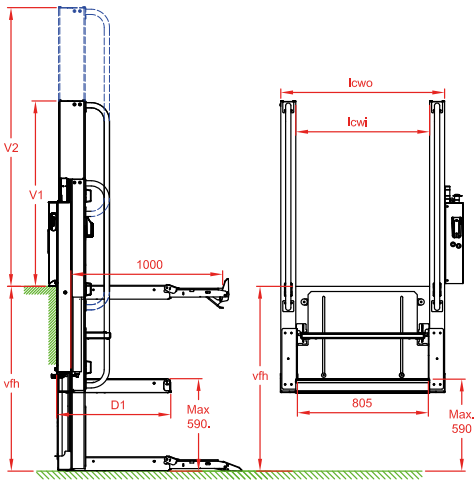
Lift capacity

CAP
300 kg

Weights [see pg. 19]

Steel construction	
Standard	185 kg
Micro	155 kg
3-Step	189 kg
Manual	155 kg

From stair to lift platform in just 5 seconds



Fitting dimensions

Type	Standard	Micro	Manual	3-Step
vfh max.	1185	1025	985	1345
D1	730	630	580	740
V1	1135	1135	1135	1295
V2	1735	1575	1575	1975
lcwo	1050	1050	1110	1050
lcwi	858	858	918	858

Technical specifications

Lift frame	2 lift columns in light-weight aluminium
Cylinders	2 lift cylinders with direct action on the lift system; no cables, chains or belts
Working principle	<ul style="list-style-type: none">• Upper step articulates from horizontal to vertical position when the platform is deployed• Lower step incorporates a sliding platform, enabling to extend from a step to a wheelchair lift platform• On Standard, Micro and 3-step models, the extension of the platform is automatic. On the Manual model, the extension part of the platform is manipulated by hand• Automatic roll-stop at the rear edge of the platform
Type of ride [see pg. 8-9]	Flat platform, level ride
Safety rails	2, fixed to the lift columns
Standard platform dimensions	1000 x 800 mm (*) Other dimensions on request.
Standard control unit	Control unit integrated in power pack
Standard finish of the lift frame	Columns in aluminium. Steel components in Protection PLUS [OAT102]

(*) Consult DHOLLANDIA re. CE conformity of the platform dimensions.