



→ Cantilever lift for trucks with trailer coupling

DH-LV.40 • 1500 - 4000 kg



The DH-LV.40 is designed for **trucks with a central-axle draw bar trailer**, whereby the draw bar coupling is mounted deep under the truck chassis.

It is equipped with an articulated bumper bar, that can be lowered to legal bumper height when the truck drives solo, and can be lifted out of the way when the trailer is attached. The DH-LV allows the operator to load and unload the truck without uncoupling the trailer. In standard configuration, the bumper bar is lifted and lowered manually, but hydraulic operation is available as an option [OAH041].

Lift capacity

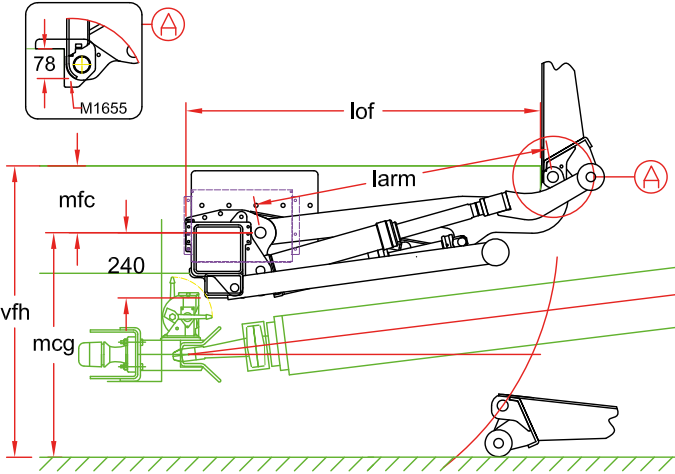
CAP	CG	LM
1500 kg	1000 mm	15 kNm
2000 kg	1000 mm	20 kNm
2500 kg	1000 mm	25 kNm
3000 kg	1000 mm	30 kNm
3500 kg	1000 mm	35 kNm
4000 kg	1000 mm	40 kNm

Weights [see pg. 19]

STEEL platform		ALU platform	
1750 mm	655 kg	1800 mm	535 kg
2000 mm	700 kg	2000 mm	550 kg

Weights incl. CE bumper

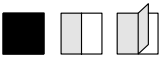
For truck-trailer combinations with draw bar



Fitting dimensions

larm		1100
vfh max.		1660
mfc max.		730
mfc min.		200
mcg max.		930
lof	at mfc max.	1090
lof	at mfc min.	1330

Technical specifications



Lift frame	Custom made frame mounted between chassis & coupling
Cylinders	2 lift cylinders + 2 tilt cylinders + 1 memory cylinder
Type of ride [see pg. 8-9]	Wedged platform. Level ride + automatic tilt at ground level
Platform material	Aluminium or steel (alu = max. 3000 kg)
Platform overlap under floor	-78 mm
Standard platform depths	Steel: 1750 - 2000 mm (max. 4500 mm) Alu: 1800 - 2000 mm (max. 4500 mm)
Standard platform widths	Steel: 2350 - 2480 - 2500 - 2520 - 2550 mm Alu: free up to 2550 mm in steps of 5 mm
Lift arm length	1100 mm
Lift arm width	1300 mm (other on request)
Std. control unit [see pg. 10]	OAE030.BT
Standard finish of the lift frame	Hot-dip zinc plated finish [OAT104]