



→ Cantilever lift for light commercial vehicles

DH-LEZ.10 • 500 - 1000 kg



The DH-LEZ.10 is specially designed for **vertically folding platforms** [option OAP406] and offers **maximum flexibility** to the operator. When the platform stands in its travel position, one door remains free and the **driver has free access** to the cargo space inside the body. When large and heavy cargo must be handled, the platform can be opened into horizontal work position, and unfolded to a **full-width platform** in a matter of seconds.

Thanks to the wide arm center, the DH-LEZ.10 offers **superior platform stability**. It is suitable for light and medium-duty trucks up to 7.5T GVW, and available with standard bolt-on mounting plates, or quick-fit mounting plates adapted to most popular brands and types of van chassis.

Lift capacity

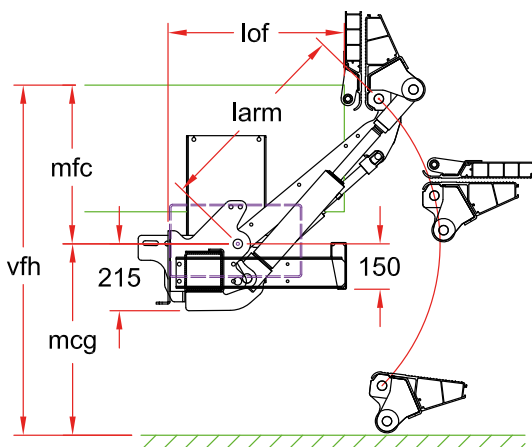
CAP	CG	LM
500 kg	600 mm	3 kNm
750 kg	600 mm	4,5 kNm
1000 kg	600 mm	6 kNm

Weights [see pg. 19]

ALU platform	
1250 mm	215 kg
1450 mm	223 kg
1600 mm	229 kg

Weights incl. CE bumper

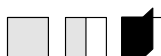
Foldable platform offering free access to the cargo space



Fitting dimensions

larm		570	650
vfh max.		1060	1180
mfc max.		510	580
mfc min.		250	300
mcg max.		550	600
lof (*)	at mfc max.	440	450
lof (*)	at mfc min.	645	710

(*) Measured with folding platform OAP406



Technical specifications

Lift frame	120 x 120 mm
Cylinders	2 lift cylinders + 1 tilt cylinder + 1 memory cylinder
Type of ride [see pg. 8-9]	Wedged platform. Level ride + automatic tilt at ground level
Platform material	Light-weight aluminium
Platform overlap under floor	no data
Standard platform depths	1250 - 1450 - 1600 mm
Standard platform widths	Free up to 2300 mm in steps of 5 mm
Lift arm lengths	570 - 650 mm
Lift arm width	1216 mm
Std. control unit [see pg. 10]	OAE030.BT
Standard finish of the lift frame	Protection PLUS [OAT102]