



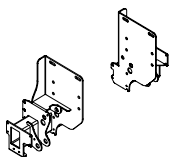
→ Cantilever lift for light commercial vehicles

DH-LMQ.10 • 500 - 1000 kg

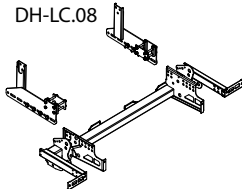


The DH-LMQ.10 is equipped with premounted mounting plates at a fixed centre distance. This strong 4-cylinder construction without cross tube allows to **save weight**, and to leave the **spare wheel in its original position** (in most cases), without compromising on stability. The former model DH-LMQ.07 is now replaced by the DH-LMA.08 with arm widths 846 - 1006 mm.

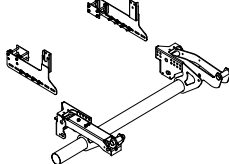
DH-LMQ.10



DH-LMA.08
DH-LC.08



DH-LE.08



Lift capacity

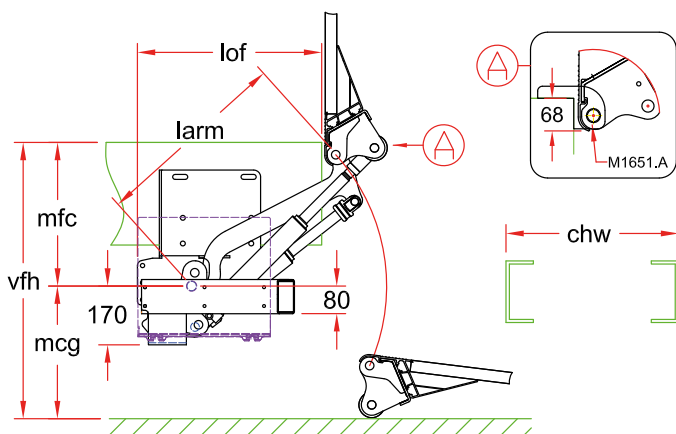
CAP	CG	LM
500 kg	600 mm	3 kNm
750 kg	750 mm	5.6 kNm
1000 kg	750 mm	7.5 kNm

Weights [see pg. 19]

ALU platform	
1250 mm	195 kg
1450 mm	203 kg
1600 mm	209 kg

Weights incl. CE bumper

Light-weight 4-cylinder frame without cross beam

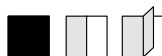


Fitting dimensions

larm		650	750	750
vfh max. (1)		1080	1220	1220
mfc max.		530	610	610
mfc min.		300	300	300
mcg max.		550	610	610
lof	at mfc max.	540	600	600
lof	at mfc min.	710	815	815

(1) For higher floor heights, please refer to type DH-LM.15

Technical specifications



Lift frame	Compact lift frame without cross beam
Cylinders	2 lift cylinders + 2 tilt cylinders
Type of ride [see pg. 8-9]	Wedged platform. Level ride + automatic tilt at ground level
Platform material	Light-weight aluminium
Platform overlap under floor	-68 mm
Standard platform depths	1250 - 1450 - 1600 - 1800 mm max.
Standard platform widths	Free up to 2550 mm in steps of 5 mm
Lift arm lengths	650 - 750 mm
Lift arm widths CA [chassis width]	820 mm [chw = 700] - 870 mm [chw = 750] - 975 mm [chw = 860]
Standard control unit [see pg. 11]	OAE030.BT.P
Standard finish of the lift frame	Protection PLUS [OAT102]