



→ Slider lift for trucks, trailers and semi-trailers

DH-SO7.20 • 1500 - 2000 kg



The slider lifts DH-SO... are equipped with a double folded platform, that rests on top of the lift arms when the lift is stowed away in its travel position. This compact construction is perfectly fit for installation on vehicles with **very short overhang** (e.g. semi-trailers with rear steering axle). Its platform is made of **2 light-weight aluminium sections**, to **maximize the pay-load** of the vehicle and make the manual folding and unfolding of the platform as easy as possible for the operator.

The DH-SO7 is lighter than the DH-SO6 and offers more ground clearance, but requires 50 mm more overhang for an equivalent platform depth. It is designed for **general purpose distribution and parcel delivery**.

Both the DH-SO6 and DH-SO7 offer 1500-2000 kg lift capacity, and are suitable for heavy-duty trucks from 10-25T GVW, trailers and semi-trailers.

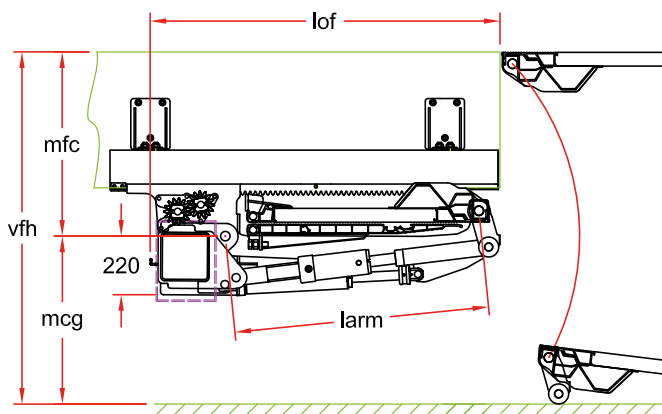
Lift capacity

CAP	CG	LM
1500 kg	750 mm	11.25 kNm
2000 kg	750 mm	15 kNm

Weights [see pg. 19]

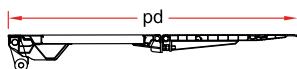
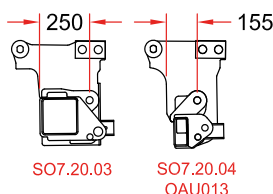
ALU / ALU	
1400 mm	485 kg
1600 mm	505 kg
1800 mm	530 kg

Double folded platform for vehicles with short overhang



Fitting dimensions SO7.20.03

larm	800	900	1000
vfh max.	1305	1420	1600
mfc max.	655	710	790
mcg max.	650	710	810
lof	1130	1230	1330
lof OAU013	-90	-90	-90
pd max.	1400	1600	1800
pd min.	1400	1600	1600



Technical specifications

Lift frame	<ul style="list-style-type: none"> Standard: 180 x 180 mm Option OAU013: compact special frame
Cylinders	2 lift cylinders + 2 tilt cylinders
Retraction IN / OUT	Hydromotor + gear wheel system
Type of ride [see pg. 8-9]	Wedged platform. Level ride + automatic tilt at ground level
Platform material	Alu / Alu
Standard platform depths	1600 - 1700 - 1800 mm
Standard platform widths	2300 - 2400 mm Other widths on request [OAP603]
Lift arm lengths	800 - 900 - 1000 mm
Lift arm widths	800 - 1300 - 1450 - 1550 mm
Std. control unit [see pg. 10]	OAE030.BT
Standard finish of the lift frame	Hot-dip zinc plated finish [OAT104]