



→ Slider lift for trucks with trailer coupling

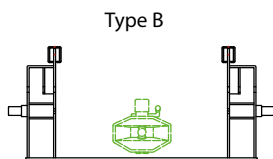
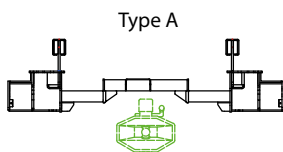
DH-SV.20 • 1500 - 2000 kg



The **DH-SV** is designed for **trucks with a central-axle draw bar trailer**. In order to optimize the mounting situation, the DH-SV is **custom made** in function of the specific dimensions of the chassis, the trailer coupling and the draw bar.

Depending on the vehicle dimensions, the DH-SV can be deployed and used without uncoupling the trailer (when type A lift frame can be used, which is in most cases).

The DH-SV is available with a central retraction cylinder, or with a dual hydromotor system [option OAH022.2].



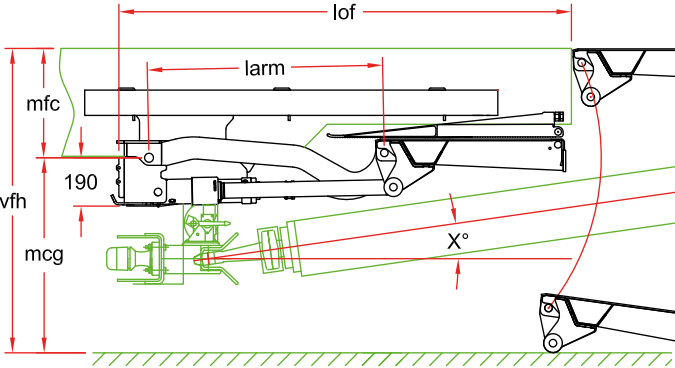
Lift capacity

CAP	CG	LM
1500 kg	750 mm	11.25 kNm
2000 kg	750 mm	15 kNm

Weights [see pg. 19]

STEEL / ALU		ALU / ALU	
1500 mm	580 kg	1500 mm	550 kg
1700 mm	600 kg	1700 mm	565 kg

Designed for trucks with a draw-bar trailer



Fitting dimensions

larm		820	880	940	1000
vfh max.		1360	1460	1560	1660
mfc max.		650	700	750	800
mcg max.		710	760	810	860
lof (1) (2)	1500 mm platform	1600	1660	1720	1780
lof (1) (2)	1700 mm platform	1700	1760	1820	1880
lof (1) (2)	+ option OAP610	-100	-100	-100	-100

- (1) In order to create sufficient clearance to the draw bar, the lift might need to be fitted further forward. Consult DHOLLANDIA for a detailed study.
- (2) Overhang measured to the end of the lift frame. Retraction cylinder between chassis rails (if applicable) not taken into account.

Technical specifications

Lift frame	Custom made around the coupling
Cylinders	2 lift cylinders + 2 tilt cylinders
Retraction IN / OUT	Centrally mounted retraction cylinder [OAH023] or dual hydromotor [OAH022.2]
Type of ride [see pg. 8-9]	Wedged platform. Level ride + automatic tilt at ground level
Platform material	Steel / Alu or Alu / Alu
Standard platform depths	1500 - 1700 - 1800 mm Longer platforms on request [OAP602]
Standard platform widths	2300 - 2400 mm Other widths on request [OAP603]
Lift arm lengths	820 - 880 - 940 - 1000 mm
Lift arm widths	1300 - 1450 - 1550 mm
Std. control unit [see pg. 10]	OAE030.BT
Standard finish of the lift frame	Protection PLUS [OAT102]. Hot-dip zinc plated finish available as option [OAT105]