

1- Introduction

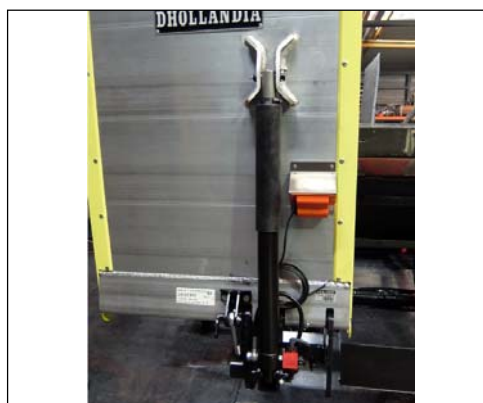
This document forms a change to the existing fitting instructions for van lifts type DH-LSP ref. FIT-LSP.05-2008-01.pdf.

The old set-up with the twin cylinders at the back of the platform (1 hydraulic cylinder, 1 spring cylinder) has been replaced by 1 single tilt cylinder with internal spring [see newflash I-COMM-2014-04 NL_FR_EN-DH-LSP developments from 2014-10-23].

This single tilt cylinder needs to be adjusted in a different way, as follows:



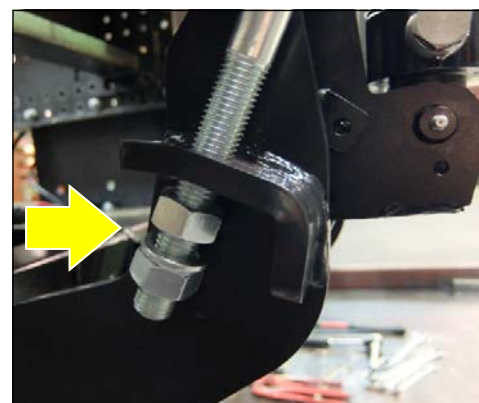
2- Step by step procedure



Start position: prior to closing the platform fully, proceed with care so that platform doesn't bang into rear doors.



Loosen bolts of at bottom end of tension rod to allow correct orientation of platform.



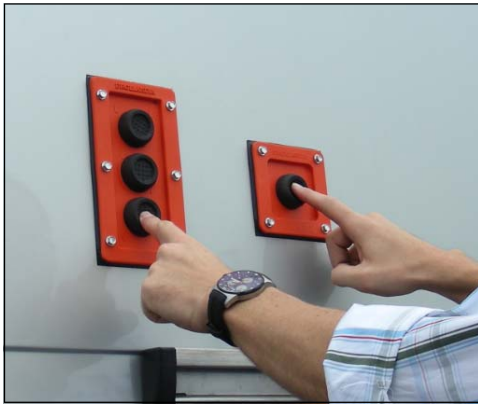
Secure platform against falling by means of a hoist or forklift.



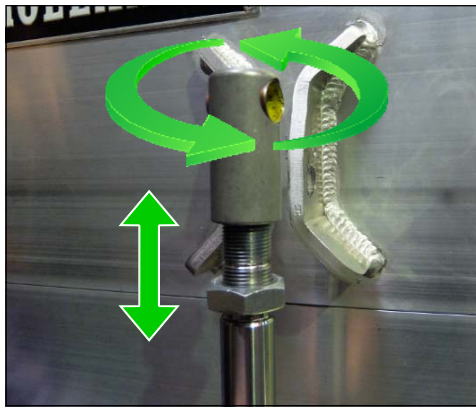
Loosen collar of rubber gaiter, and pull down gaiter



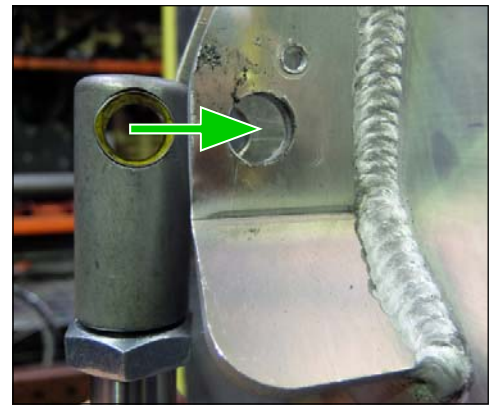
Open platform 45° to release tension of internal spring inside the cylinder. Remove articulation pin. Loosen counter-nut of tilt cylinder extension.



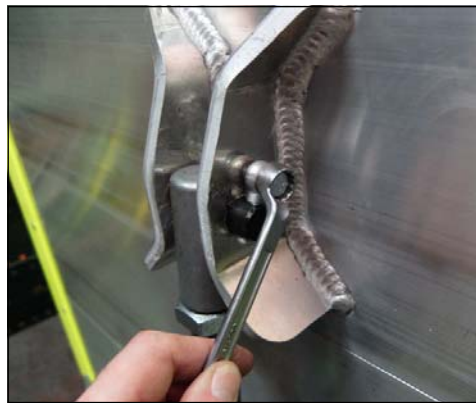
Use function CLOSE of electric control unit to fully extend tilt cylinder to the end of its stroke.



Orient and tilt platform in the desired vertical position behind rear doors of vehicle. Turn extension rod CW or CCW until obtained stroke coincides with hole in platform mounting plates.



Mount articulation pin back through mounting plates on platform and through tilt cylinder extension.



Mount eye bolt, then secure articulation pin by means of spring washer and bolt. Fasten bolt with required torque.



Fasten counter-nut tight against underside of tilt cylinder extension rod.



Tighten 1st nut of tension rod:
1. turn nut CW until it hits the steel holder
2. Use key to turn nut further 1 full turn of 360°



Insert spring washer between the 2 nuts. Use key to fasten counter-nut tight against 1st nut. Fast nut with required torque.



Bring rubber gaiter back in correct position, and tighten collar.



Use functions OPEN and CLOSE of electric control unit to test and verify if adjustment works have been carried out properly, and platforms in desired position behind vehicle rear doors.



NOTICE !

- It is important to adjust the platform orientation and tilt cylinder extension with due diligence. Incorrect or careless work can cause the platform to hit the rear doors, and cause significant property damage.

3- Tension rod or compression buffers?

- The tension rod is used to stiffen and solidify the platform in its position behind the vehicle doors, with 2 goals:
 1. protect the rear doors from impact and damage
 2. prevent premature wear of the articulation pins and bushes of the platform, caused by excessive rocking of the platform
- It is preferable and recommended however to mount rubber compression buffers off the sides of the platform, and let these press against the rear door hinges, or other reinforced section of the rear frame of the vehicle.



4- No tension rod needed

- No tension rod (and tension rod adjustment) is needed in mounting situations where the platform replaces the rear doors of the vehicle (option OAT200).



In case of doubt, don't hesitate, and contact the national **DHOLLANDIA** agent for any further help or advice.