



→ Cantilever lift for light commercial vehicles

## DH-LE.08 • 500 - 750 kg



The DH-LE is a **light-weight 2-cylinder lift**, at the entry level of DHOLLANDIA's range of cantilever lifts. Thanks to its compact lift frame and short lift arms, it ideally suits light commercial vehicles with **very short overhang**.

The ingenious lift frame construction without cross tube allows to **save weight** and (in most cases) to **leave the spare wheel in its original position**.

The DH-LE is available with conventional mounting plates to suit regular chassis, or with brand-specific quick-fit mounting plates (depending on chassis type, wheel base and overhang). The DH-LE.08 cannot be used in combination with a towing hitch (use DH-LMA.08).

### Lift capacity

CAP	CG	LM
500 kg	600 mm	3 kNm
750 kg	600 mm	4.5 kNm

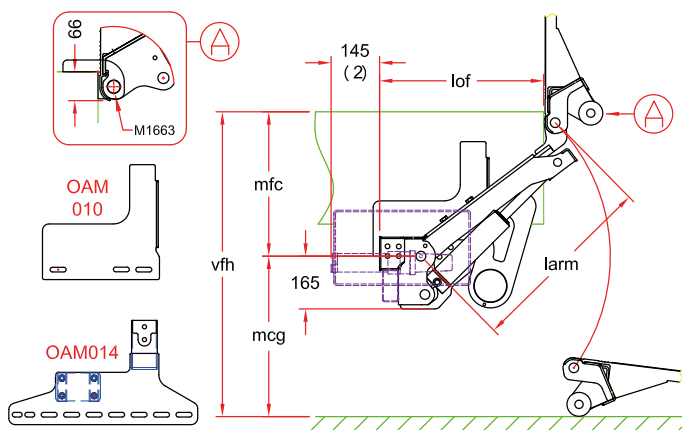
Remark: this lift is not distributed in Belgium, Germany and Sweden.

### Weights [see pg. 19]

ALU platform	
1250 mm	165 kg
1450 mm	172 kg
1600 mm	178 kg
1800 mm	185 kg

Weights incl. CE bumper

# Modern 2-cylinder lift for very short overhang



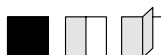
## Fitting dimensions

larm		590
vfh max.		1060
mfc max.		490
mfc min.		300
mfcg max.		570
lof (1-2)	at mfc max.	470
lof (1-2)	at mfc min.	620

(1) Overhang valid for standard frame. Lof dimension may change for quick-fit executions. Ask confirmation from **DHOLLANDIA**.

(1) Standard supply with horizontally positioned pump unit. Tail lift is available with vertically mounted or separate pump unit if overhang needs to be reduced further. Consult **DHOLLANDIA** for optimum solution.

## Technical specifications



Lift frame	Compact lift frame without cross beam
Cylinders	1 lift cylinder + 1 tilt cylinder + 1 memory cylinder
Type of ride [see pg. 8-9]	Wedged platform. Level ride + automatic tilt at ground level
Platform material	Light-weight aluminium
Platform overlap under floor	-66 mm
Standard platform depths	1250 - 1450 - 1600 mm (max. 1800 mm)
Standard platform widths	Free up to 2550 mm in steps of 5 mm
Lift arm length	590 mm
Lift arm widths	894 - 944 - 1054 - 1171 - 1248 - 1336 mm Adapted to the various brands and types of chassis
Standard control unit [see pg. 11]	OAE030.BT.P
Standard finish of the lift frame	Protection PLUS [OAT102]