



→ Cantilever lift for light commercial vehicles

## DH-LMA.08 • 500 - 750 kg



The DH-LMA.08 is the lightest 4-cylinder cantilever lift available on the market. Thanks to its **benchmark weight**, its **superior stability** and its wide choice of value-adding options, this tail lift fulfills all the requirements of a modern, efficient and environmentally friendly urban distribution vehicle.

The DH-LMA.08 offers approx. **30 kg weight advantage** in comparison to the current DH-LMA.10, and is available with lift capacities of 500-750 kg. It is suitable for all van chassis up to max. 1050 mm floor height, and is supplied with quick-fit mounting plates, adapted to all popular brands and types of chassis. Unlike the DH-LE.08 and some competing 3-cylinder lifts offered on the market, the DH-LMA.08 can be equipped with a **towing hitch construction**.

### Lift capacity

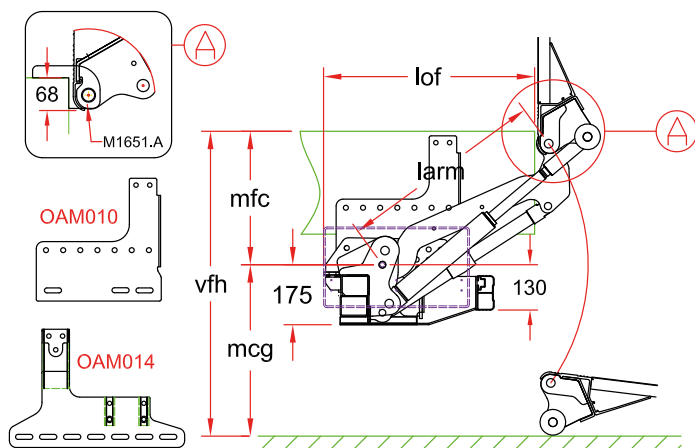
CAP	CG	LM
500 kg	600 mm	3 kNm
750 kg	600 mm	4,5 kNm

### Weights [see pg. 19]

ALU platform	
1250 mm	166 kg
1450 mm	173 kg
1600 mm	179 kg
1800 mm	186 kg

Weights incl. CE bumper

# Maximum pay-load for transport over the last mile



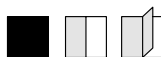
## Fitting dimensions

larm		600
vfh max. (1)		1050
mfc max.		520
mfc min.		250
mcg max.		530
lof (2)	at mfc max.	485
lof (2)	at mfc min.	690

(1) For higher floor heights, please refer to type DH-LM.10

(2) Overhang valid for standard frame. Lof dimension may change for quick-fit executions. Ask confirmation from DHOLLANDIA.

(2) Standard supply with horizontally positioned pump unit. Tail lift is available with vertically mounted or separate pump unit if overhang needs to be reduced further. Consult DHOLLANDIA for optimum solution.



## Technical specifications

Lift frame	Slim rectangular cross tube
Cylinders	2 lift cylinders + 2 tilt cylinders
Type of ride [see pg. 8-9]	Wedged platform. Level ride + automatic tilt at ground level
Platform material	Light-weight aluminium
Platform overlap under floor	-68 mm
Standard platform depths	1250 - 1450 - 1600 - 1800 mm (max. 1800 mm)
Standard platform widths	Free up to 2550 mm in steps of 5 mm
Lift arm length	600 mm
Lift arm widths	<ul style="list-style-type: none"> <li>LMA.08.01: 846 – 896 – 1006 – 1123 -1200 mm 1288 mm (adapted to the various brands and types of chassis)</li> <li>LMA.08.02: 970 – 1200 mm (universal)</li> </ul>
Standard control unit [see pg. 11]	OAE030.BT.P
Standard finish of the lift frame	Protection PLUS [OAT102] Hot-dip zinc plated finish available as option [OAT105]